

# \*214

## Eris

Standardowa  
powierzchnia  
nadruku

Standard  
printing  
area

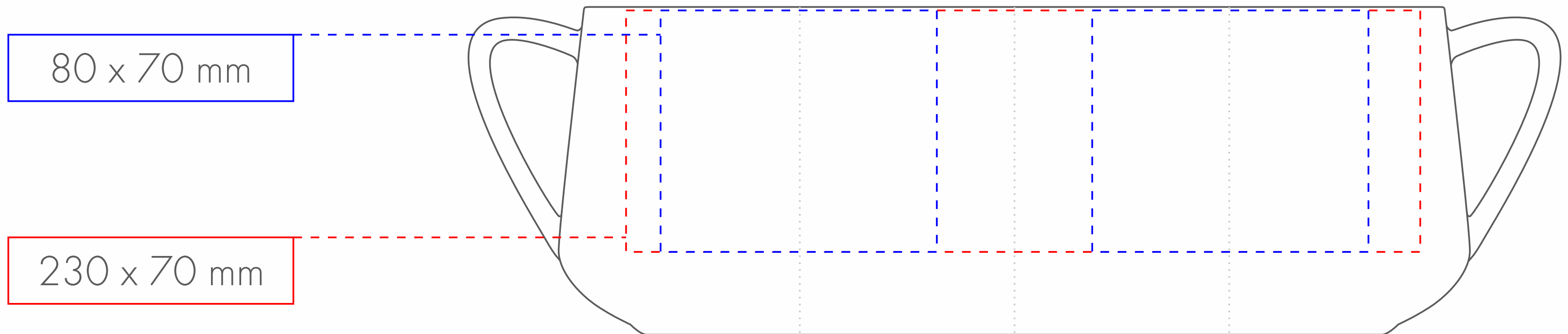
SCALE  
1 : 1

kalka jedno /  
dwustronnie

decals one side /  
both sides

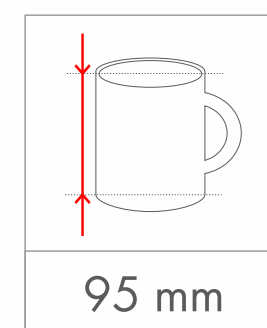
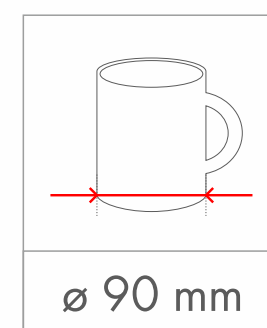
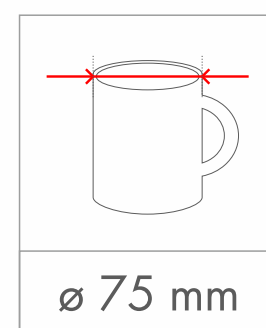
kalka  
wpokół kubka

decals around  
the mug



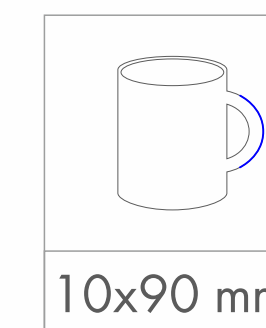
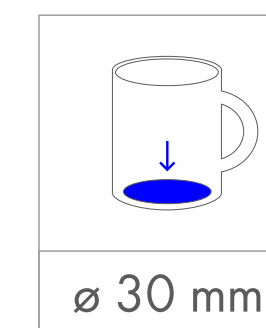
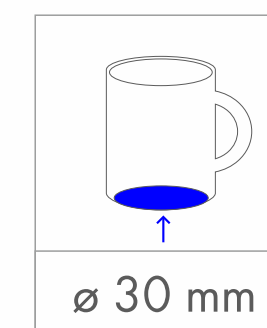
wymiary  
kubka

dimensions  
of the mug



dodatkowe  
pola nadruku

additional  
print areas



Jak przygotować  
plik do druku

How to prepare  
file to the print

projekt  
wektorowy

vector  
design

typ pliku  
cdr | pdf | eps | ai

file type  
cdr | pdf | eps | ai

kolory  
Pantone

Pantone  
colours

teksty zamienione  
na krzywe

text converted  
to the curves

minimalna grubość  
linii - 0,2 mm

minimum line  
thickness - 0,2 mm

projekt  
rastrowy

raster  
design

typ pliku  
tiff

file type  
tiff

rozdzielczość  
300 dpi

resolution  
300 dpi